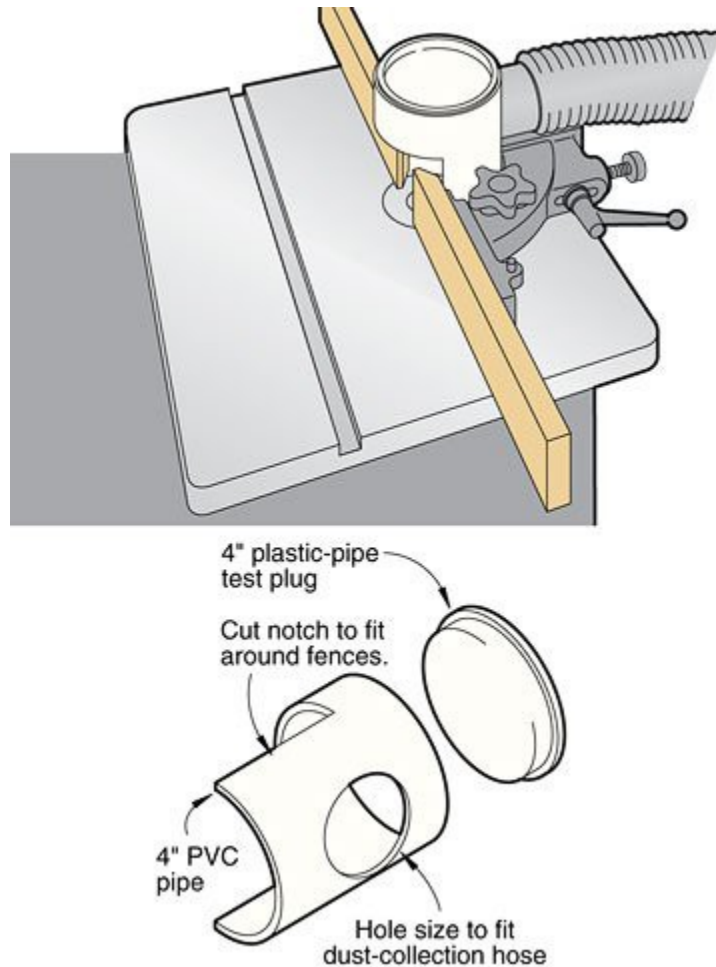


## PVC DC hood for shapers and router tables...

First, cut a short length of 4" PVC drain pipe and used w/a bandsaw (a hacksaw would work) to cut a notch, as shown, so it fit snugly against the fence. Using a holesaw, cut a hole in the pipe slightly smaller than the outside diameter of your dust-collector hose, then file and sand the hole for a snug fit. Top off the hood with a 4" PVC test plug.



**Plan "B"... use a 4" combo or a 45° Wye and attach your 4" DC hose to the takeoff...**

